

PART OF SECTION 8, T.5N., R.1W., S.L.B. & M.  
AMENDED PLAT OF  
WASHINGTON TERRACE PARCEL 'A'

BLOCK 9 SEE PAGE 1

TAXING UNIT: 24

IN WASHINGTON TERRACE CITY

SCALE 1"=50'

FOR COMPLETE ENG DATA SEE  
ORIGINAL DEDICATION PLAT IN  
BOOK 10, PAGE 77-B OF RECORDS.

5' UTILITY & DRAINAGE EASEMENTS EACH  
SIDE OF PROPERTY LINES AS INDICATED  
BY DASHED LINES EXCEPT AS OTHERWISE  
SHOWN.

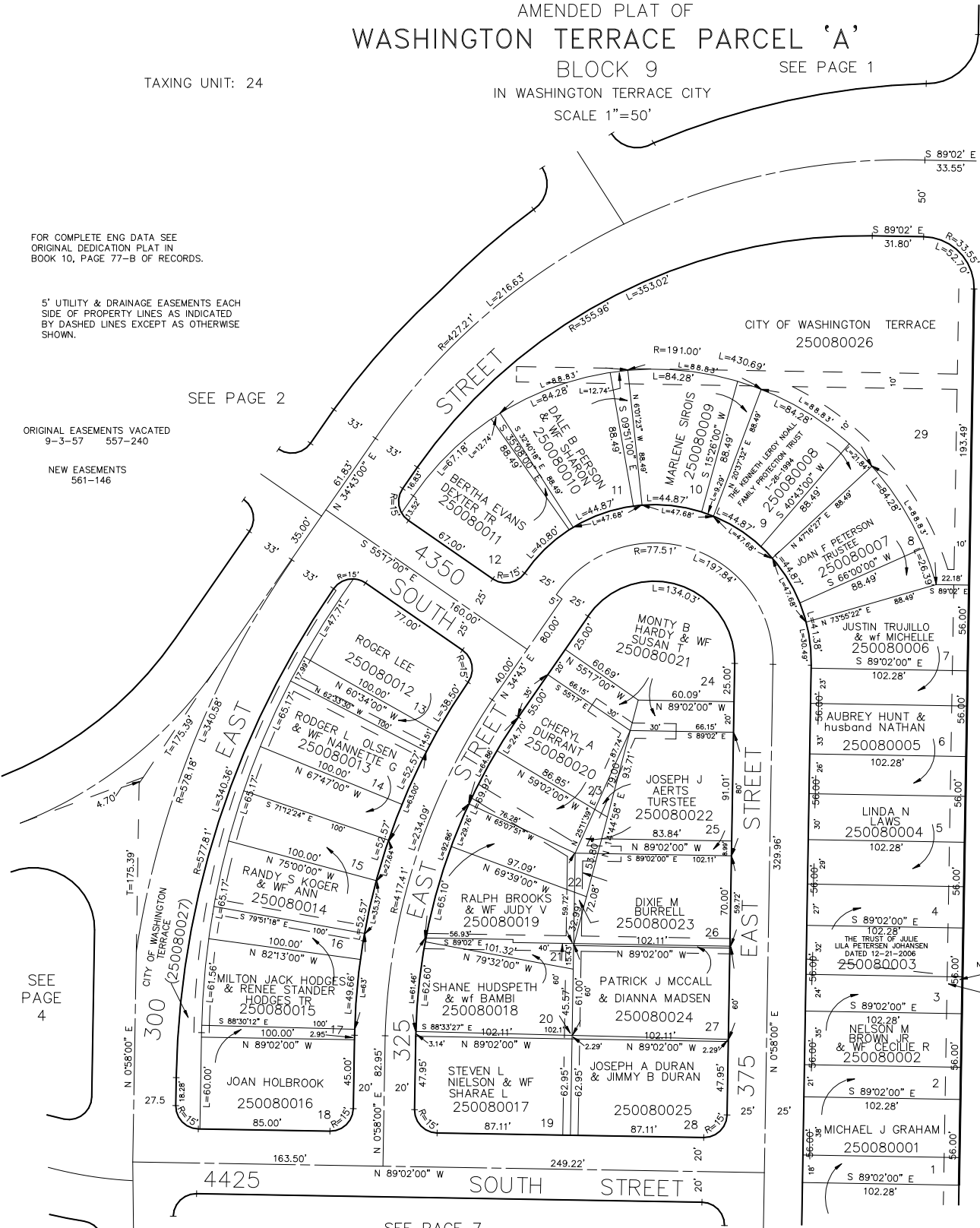
SEE PAGE 2

ORIGINAL EASEMENTS VACATED  
9-3-57 557-240

NEW EASEMENTS  
561-146

SEE PAGE  
4

SEE PAGE 7



WASHINGTON BLVD.

WASHINGTON